



**DEPARTMENT OF THE AIR FORCE
99TH CIVIL ENGINEER SQUADRON (ACC)
NELLIS AIR FORCE BASE, NEVADA**



MAY 10 2017

99 CES/CENP
6020 Beale Avenue
Nellis AFB, NV 89191-6520

Skip Canfield, Nevada State Clearinghouse
Nevada Division of State Lands
901 South Stewart Street, Suite 5003
Carson City, Nevada 89701

Dear Mr. Canfield,

The United States Air Force (USAF) is preparing an Environmental Assessment (EA) in accordance with the National Environmental Policy Act (NEPA) to evaluate the potential impacts associated with Nellis Air Force Base (AFB) granting an easement to Clark County Department of Public Works (Clark County). The purpose of granting the easement is so Clark County can improve and expand Carey Avenue from Nellis Boulevard to Toiyabe Street, adjacent to the southern boundary of Nellis AFB, Nevada, by building a new collector roadway connection with two alignments under consideration as shown in the Attachments. Additionally, as a part of the County's action, Clark County would reconstruct the Nellis AFB boundary fence in the project area. The USAF, in conjunction with Clark County, identified a parcel of land as the subject of this easement and for this proposed road construction. Through a public input process, Clark County selected alignments that are reasonable alternatives to meet the purpose of this project.

The EA will evaluate the Proposed Action (granting an easement to Clark County) and the No Action alternatives. The EA will assess the potential impacts associated with the Proposed Action and the alignment options, including traffic, noise, utilities relocation, air quality, and socioeconomic impacts. The EA will also examine the cumulative effects when combined with past, present, and any foreseeable future proposals.

Please reach out to my point of contact, provided below on any issues or concerns for the Nevada State Clearinghouse in the development of this EA. We ask for your assistance in identifying any issues or concerns of which we may be unaware, particularly those that may be affected by this proposal.

The USAF point of contact for Environmental Planning is Mr. Tod Oppenborn. Please send him your comments and concerns at 6020 Beale Ave, Nellis AFB, NV, 89191-6520, or by e-mail or phone at tod.oppenborn@us.af.mil or (702) 652-9366. I look forward to receiving any input you may have regarding this endeavor. Thank you in advance for your assistance in this effort.

Sincerely,

A handwritten signature in black ink, appearing to read 'CWR', written in a cursive style.

CHARLES W. ROWLAND JR.
Chief, Portfolio Optimization

4 Attachments:

1. Regional Location
2. Study Area
3. Study Area – Alignment 1
4. Study Area – Alignment 2



Location of Carey Avenue Expansion and Improvement



Regional Location
 Carey Avenue Study
 Nellis Boulevard to Toiyabe Street
 Clark County, Nevada

Clark County
 Department of
 Public Works

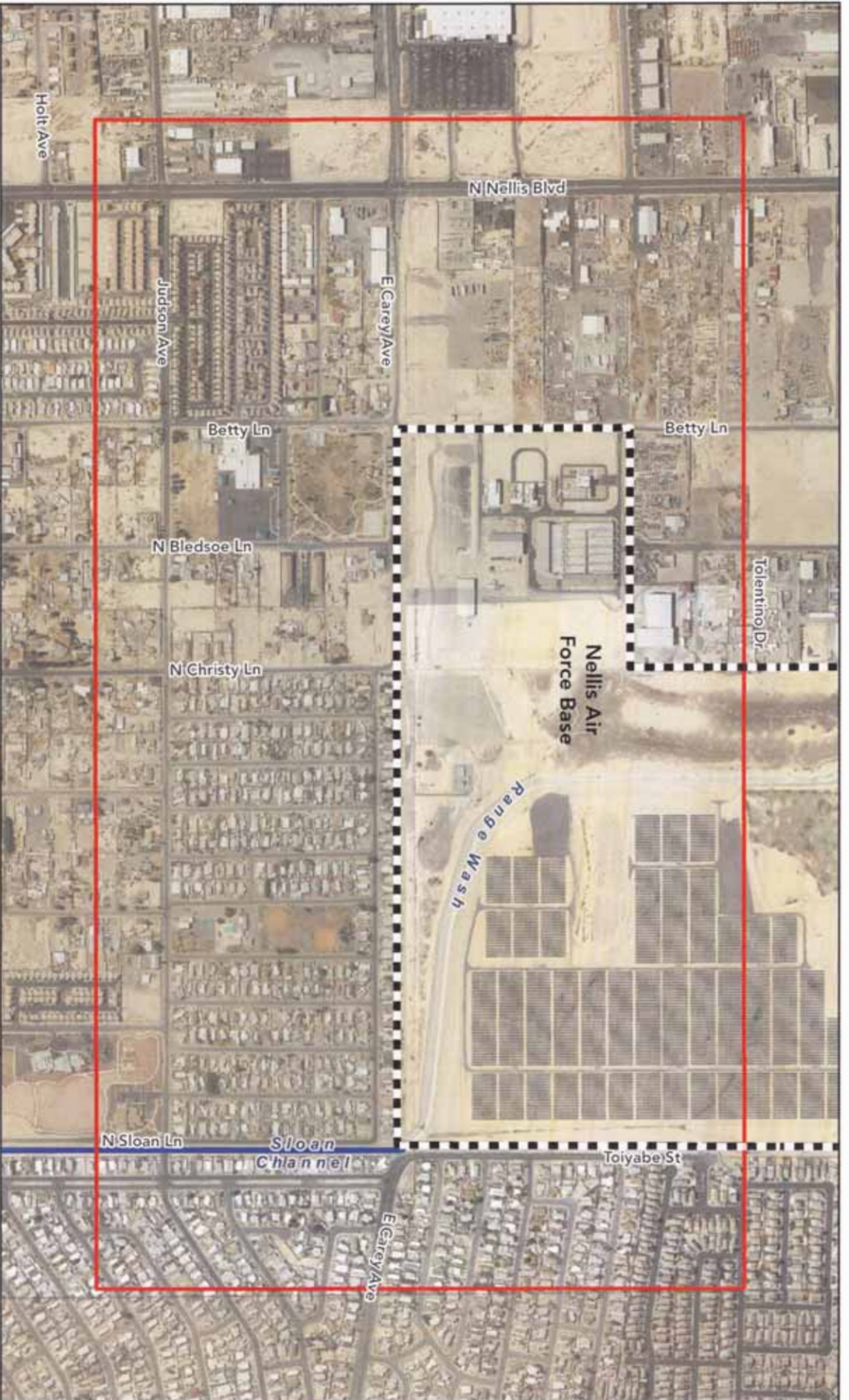
Louis Berger

Sources:
 ESRI BING Map Service
 Obtained 2016.

Coordinate System:
 Nevada State Plane Ft. East Zone
 Datum: NAD 1983

April 2017





Study Area
 Nellis Air Force Base

Sources:
 Orthophotos - Clark County Public Works, 2014
 Solar panel area updated with georeferenced imagery clip from Google Earth, 2016

Coordinate System:
 Nevada State Plane Ft. East Zone
 Datum: NAD 1983

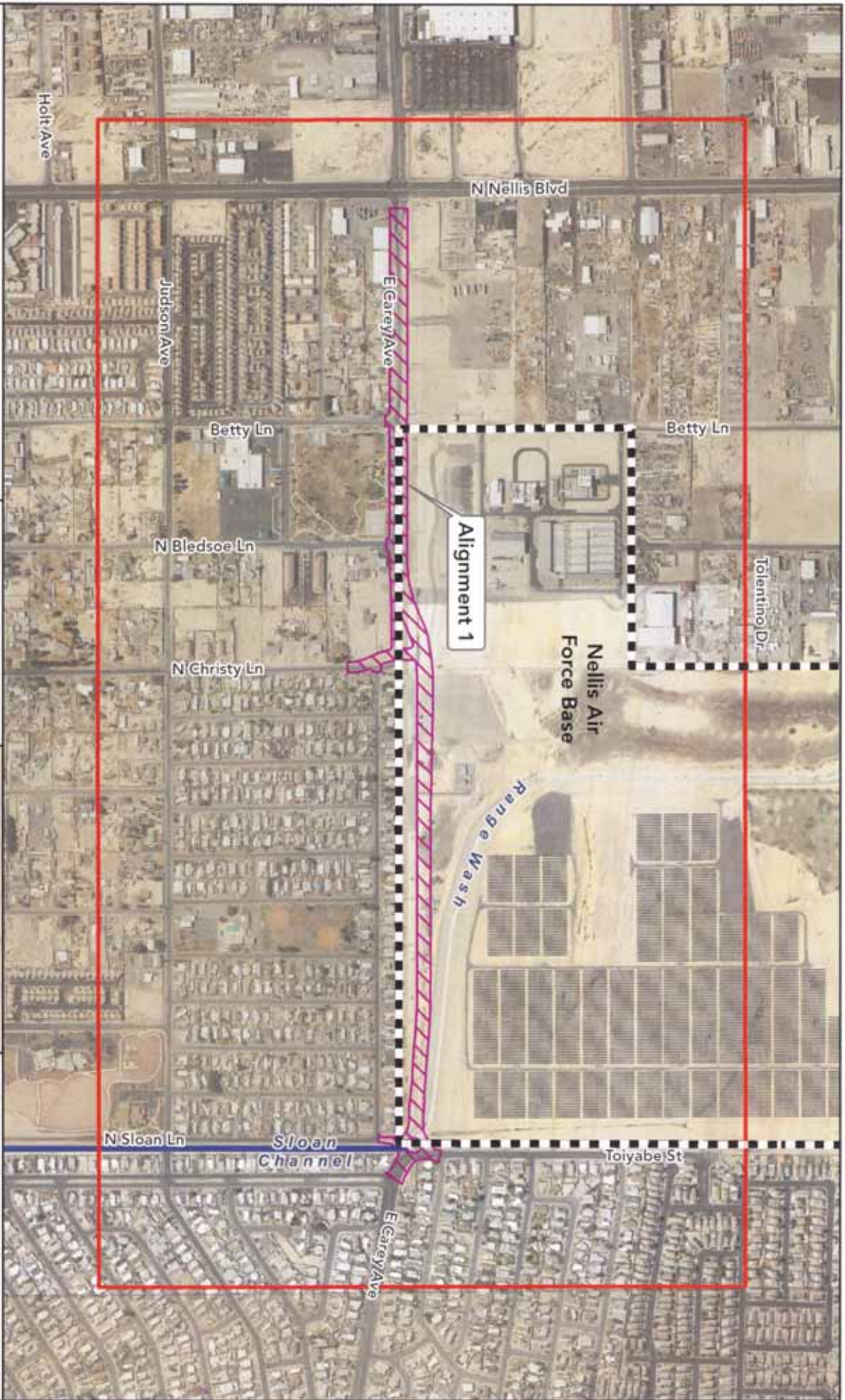
February 2017



Study Area
 Carey Avenue Study
 Nellis Boulevard to Toiyabe Street
 Clark County, Nevada

Louis Berger





 Study Area
 Nellis Air Force Base
 Alignment 1

Source:
 Orthophotos - Clark County Public Works, 2014.
 Solar panel area updated with georeferenced imagery clip from Google Earth, 2016.

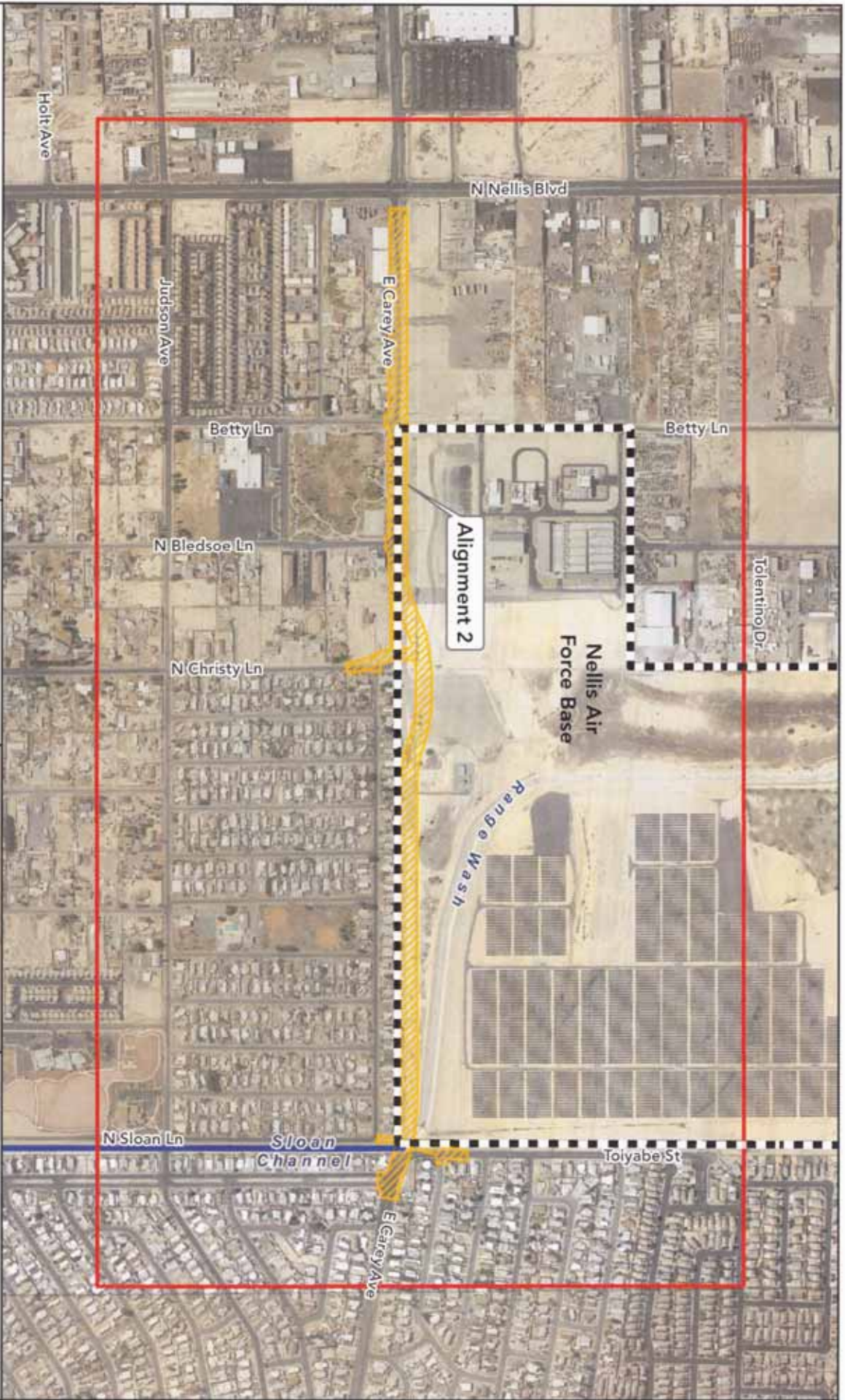
Coordinate System:
 Nevada State Plane Ft. East Zone
 Datum: NAD 1983

February 2017



Study Area - Alignment 1
 Carey Avenue Study
 Nellis Boulevard to Toiyabe Street
 Clark County, Nevada
 Clark County
 Department of
 Public Works
Louis Berger





- Study Area
- Nellis Air Force Base
- Alignment 2

Sources:
 Orthophotos - Clark County Public Works, 2014.
 Solar panel area updated with georeferenced imagery clip from Google Earth, 2016.

Coordinate System:
 Nevada State Plane Ft., East Zone
 Datum: NAD 1983

February 2017



Study Area - Alignment 2
 Carey Avenue Study
 Nellis Boulevard to Toyabe Street
 Clark County, Nevada

Clark County
 Department of
 Public Works

Louis Berger