

Public Notice

CATEGORICAL EXCLUSION CLEAN WATER STATE REVOLVING FUND LOAN

The Nevada Administrative Code (NAC) in Sections NAC 445A.742 to 445A.762, inclusive, outlines the environmental review procedures to be followed by the Division of Environmental Protection (NDEP) to meet the requirements of the National Environmental Policy Act (NEPA). This project will utilize federal funds from the Clean Water State Revolving Loan Fund and from the US Environmental Protection Agency (EPA) Special Appropriation Act Projects grants.

Project Name: Pond 2 Relining & Sludge Disposal

Project No.: 5 - Year 2017 Clean Water Priority List

Applicant: City of Fernley

Clean Water State Revolving Fund Assistance: \$1,700,000

The City of Fernley wastewater treatment plant (WWTP) is located off East Newlands Road southeast of Interstate 80 and north of U.S. Route 50 Alt within Section 9 of T. 20N., R. 25E., MDB&M. Facilities at the WWTP include influent pumping, screening and grit removal, an influent splitter box, a facultative pond treatment system, a storage pond, chlorine disinfection, and influent/effluent flow measurement. The WWTP currently discharges treated effluent to the Fernley Wildlife Management Area (FWMA),

In 2015, a NDEP compliance inspection identified nitrate readings in Monitor Well #9 that exceeded the maximum contaminant level in groundwater of 10 milligrams per liter. Pond 2, the storage pond, is suspected as the cause of the high nitrate levels. While the bottom liner of Pond 2 has never been inspected, earlier inspections revealed holes in the sidewall liner of this pond. NDEP has issued an amended Administrative Order on Consent requiring the removal/disposal of sludge from Pond 2 and relining of the pond.

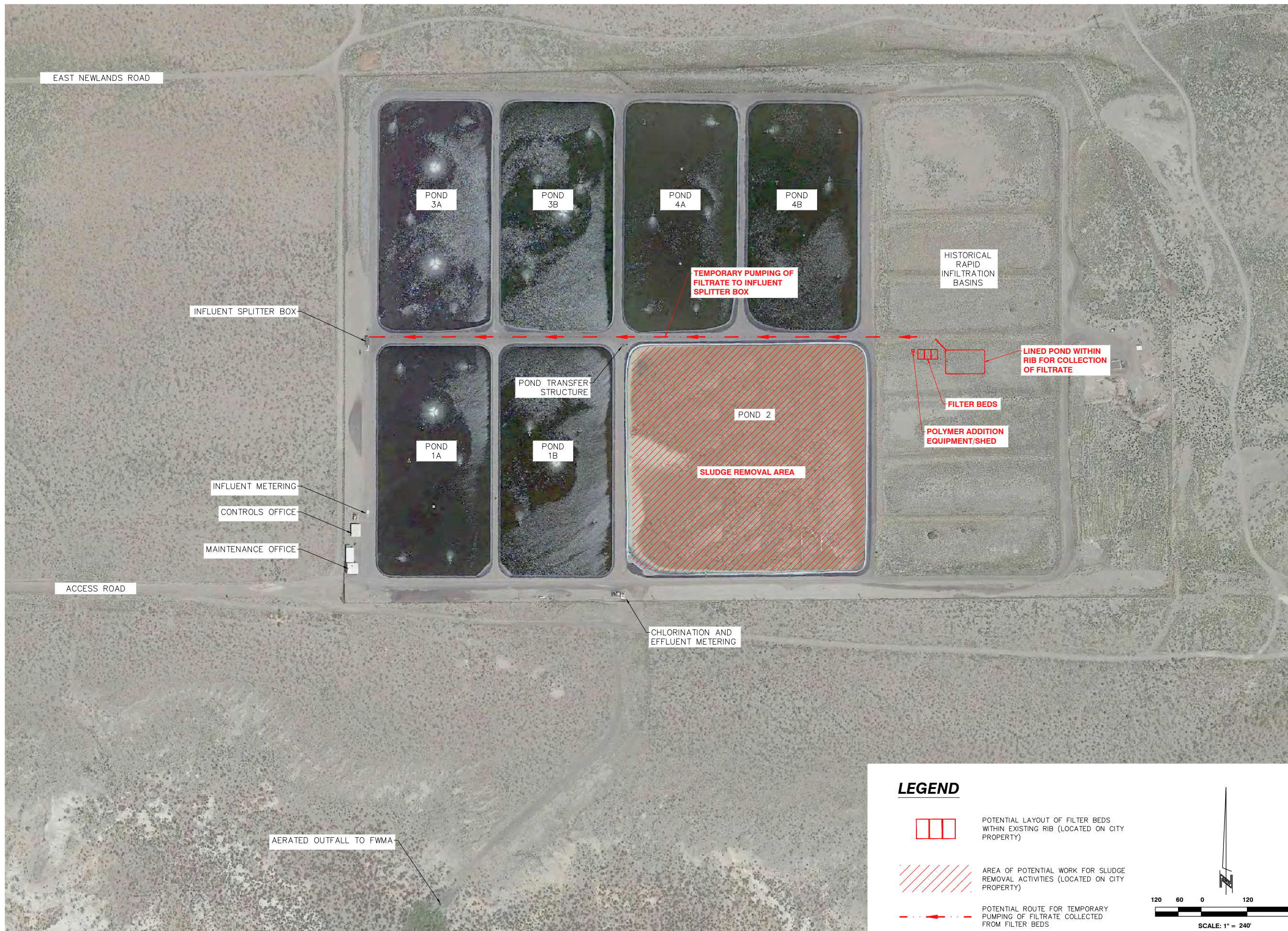
Pond 2 was originally lined with high density polyethylene in 1988. Sludge has never been removed from this pond, and the liner is approaching the end of its service life and is in need of replacement. Prior to replacement of the liner, the sludge must be removed and dewatered for landfill disposal. A preliminary engineering report identified a filter bed system that could be installed in one of the decommissioned rapid infiltration basins (RIBs) as the most expedient, long-term, cost-effective solution for dewatering the sludge from Pond 2 and from other system ponds as necessary in the future.

The proposed project includes: constructing a pump station to recirculate water from Pond 2 to the influent splitter box, constructing a filter bed system within one of the existing RIBs, removing and dewatering the sludge from Pond 2, disposing of dewatered sludge at a landfill, relining Pond 2, and installing a backup chlorine pump with controls/alarms. Replacing the Pond 2 liner will significantly reduce the future potential for leaks, thereby protecting the groundwater supply from contamination.

In September 2012, the EPA conducted an environmental review along with appropriate cross-cutter consultations and determined that the proposed project will not individually or cumulatively have a significant effect on the human environment and is eligible for a categorical exclusion. This project is eligible for a categorical exclusion under the NAC's. Based on the information and findings provided by the EPA, NDEP concurs with the EPA's determination and no further environmental review is recommended. Best management practices will be utilized during construction.

Documentation supporting these conclusions is available for public examination at the office of the Division of Environmental Protection, 901 S. Stewart St., Suite 4001, Carson City, Nevada. Comments for consideration

on this proposed decision must be submitted by August 1, 2016 to: Michelle Stamates, Drinking Water State Revolving Fund Program, 901 S. Stewart St., Suite 4001, Carson City, NV 89701-5405. Comments may also be submitted by FAX to (775) 687-9510 or by e-mail to mstamate@ndep.nv.gov. Questions regarding this notice may be directed to Michelle Stamates at (775) 687-9331. The process of environmental review shall be deemed to be complete if no comments that the NDEP determines to be significant are received within the time allowed for public comment.



L:\Projects\8957.000 - Fernley Sewer Plant PEA\DWG\Civil_3D\PEA\8-At_2D.dwg, 11/17, 04/29/2016 12:55 pm, KibbHeim

LEGEND



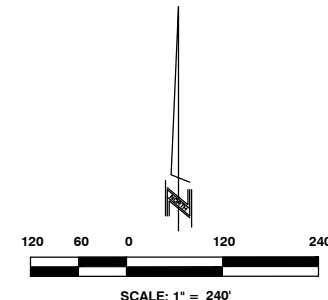
POTENTIAL LAYOUT OF FILTER BEDS WITHIN EXISTING RIB (LOCATED ON CITY PROPERTY)



AREA OF POTENTIAL WORK FOR SLUDGE REMOVAL ACTIVITIES (LOCATED ON CITY PROPERTY)



POTENTIAL ROUTE FOR TEMPORARY PUMPING OF FILTRATE COLLECTED FROM FILTER BEDS



CITY OF FERNLEY

**EAST WASTEWATER TREATMENT PLANT
ALTERNATIVE 2D (FILTER BEDS) SITE MAP
FIGURE 8**

NEVADA

FERNLEY

REV	DATE	DESCRIPTION

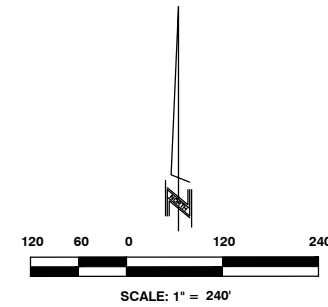
8

DATE: APRIL 2016
DRAWN BY: KT
DESIGNED BY:
CHECKED BY: TR
JOB NO.: 8957.000



LEGEND

- AREA OF POTENTIAL WORK FOR POND RELINING
- POTENTIAL LOCATION FOR POND 2 PUMP STATION
- POTENTIAL ROUTE FOR FORCE MAIN



L:\Projects\8857.000 - Fernley Sewer Plant PEA\DWG\Civil_3D\PEA\9--At_3d.dwg, 11/17, 04/23/2016 12:55 pm, KibbHein

CITY OF FERNLEY

**EAST WASTEWATER TREATMENT PLANT
ALTERNATIVE 3A (HDPE LINER) SITE MAP
FIGURE 9**

NEVADA

FERNLEY

REV	DATE	DESCRIPTION

9

DATE: APRIL 2016
DRAWN BY: KT
DESIGNED BY:
CHECKED BY: TR
JOB NO.: 8957.000