

Public Notice

CATEGORICAL EXCLUSION CLEAN WATER STATE REVOLVING FUND LOAN

The Nevada Administrative Code (NAC) in Sections NAC 445A.742 to 445A.762, inclusive, outlines the environmental review procedures to be followed by the Division of Environmental Protection (NDEP) to meet the requirements of the National Environmental Policy Act (NEPA). This project will utilize funds from the Clean Water State Revolving Loan Fund.

Project Name: Wastewater collection system improvements in the Pine Grove Subdivision

Project No.: 2 - Year 2017 Clean Water Priority List

Applicant: Churchill County

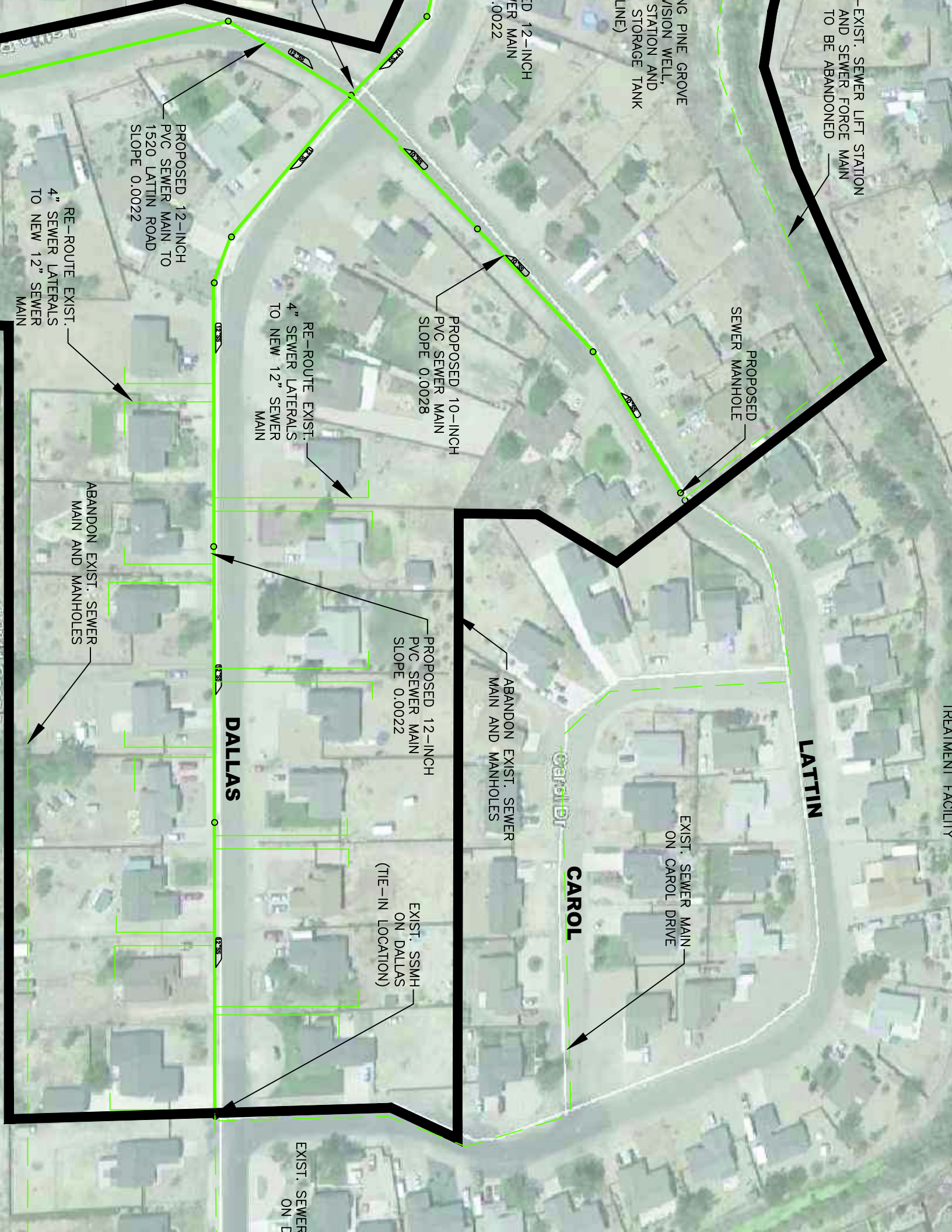
Clean Water State Revolving Fund Assistance: \$652,500

The project will be constructed entirely within the Pine Grove subdivision in Churchill County and will eliminate the Dallas lift station and force main, extend a new gravity main to residential areas, and eliminate sewer connections in areas where the current sewer line is located behind residential homes. The installation of the gravity sewer line may also allow approximately 22 Pine Grove residences to abandon their septic tanks and connect to the County wastewater system thus reducing possible sources of groundwater contamination within the County's wellhead protection area.

The existing sewer system in the Pine Grove subdivision was installed less than 25 years ago but presents a threat to public health and the environment. Sanitary sewer spills at the lift station have resulted in the release of untreated wastewater to the surface streets in this subdivision, and the current collection system location restricts adequate maintenance. NDEP assessed the potential environmental effects of the proposed project and determined that the project is eligible for a categorical exclusion because it is unlikely to have a negative effect on the quality of the environment and an environmental impact statement is not required. No national landmarks or property with nationally significant historic, architectural, prehistoric, archeological, or cultural value is affected by the project. No wetlands, floodplains, agricultural lands, or significant fish or wildlife species or habitat is affected by the project.

Consultation with appropriate cross-cutting agencies will be completed prior to signing a final commitment of financial assistance. Best management practices will be utilized during construction. Documentation supporting these conclusions is available for public examination at the office of the Division of Environmental Protection, 901 S. Stewart St., Suite 4001, Carson City, Nevada.

Comments for consideration on this proposed decision must be submitted by July 22, 2016 to: Michelle Stamates, Drinking Water State Revolving Fund Program, 901 S. Stewart St., Suite 4001, Carson City, NV 89701-5405. Comments may also be submitted by FAX to (775) 687-9510 or by e-mail to mstamate@ndep.nv.gov. Questions regarding this notice may be directed to Michelle Stamates at (775) 687-9331. The process of environmental review shall be deemed to be complete if no comments that the NDEP determines to be significant are received within the time allowed for public comment.



EXIST. SEWER LIFT STATION AND SEWER FORCE MAIN TO BE ABANDONED

EXIST. PINE GROVE VISION WELL, STATION AND STORAGE TANK (LINE)

EXIST. 12-INCH PVC SEWER MAIN

PROPOSED SEWER MANHOLE

PROPOSED 10-INCH PVC SEWER MAIN SLOPE 0.0028

RE-ROUTE EXIST. 4" SEWER LATERALS TO NEW 12" SEWER MAIN

PROPOSED 12-INCH PVC SEWER MAIN TO 1520 LATTIN ROAD SLOPE 0.0022

RE-ROUTE EXIST. 4" SEWER LATERALS TO NEW 12" SEWER MAIN

PROPOSED 12-INCH PVC SEWER MAIN SLOPE 0.0022

ABANDON EXIST. SEWER MAIN AND MANHOLES

DALLAS

ABANDON EXIST. SEWER MAIN AND MANHOLES

EXIST. SSMH ON DALLAS (TIE-IN LOCATION)

CAROL

EXIST. SEWER MAIN ON CAROL DRIVE

LATTIN

EXIST. SEWER MAIN ON DALLAS