

BLM Nevada News

ELY DISTRICT OFFICE NO. 2015-21

FOR RELEASE: Monday, May 4, 2015

CONTACT: Chris Hanefeld, (775) 289-1842, chanefel@blm.gov

BLM Seeks Public Input on Public Lands Nominated for Oil and Gas Exploration and Development

Ely – The Bureau of Land Management (BLM) Ely District is asking for public input on issues associated with potential oil and gas leasing, which may later include exploration and development, on 94 parcels of public land, totaling 140,389 acres. The BLM is analyzing the parcels to identify potential impacts in an environmental assessment (EA), in accordance with the Oil & Gas Leasing Reform mandated in 2010. The public input period concludes **Friday, May 22**.

Scoping information and other documents can be found at <http://on.doi.gov/lzIOyhA>. Interested individuals should address all written comments to the BLM Ely District, Caliente Field Office, P.O. Box 237, Caliente, NV 89008, Attn: 2015 Oil & Gas Lease Sale or fax them to (775) 726-8111, Attn: 2015 Oil & Gas Lease Sale. Email comments will not be accepted.

Before including your address, phone number, e-mail address, or other personal identifying information in your comment, you should be aware that your entire comment – including your personal identifying information – may be made publicly available at any time. While you can ask us in your comment to withhold your personal identifying information from public review, we cannot guarantee that we will be able to do so.

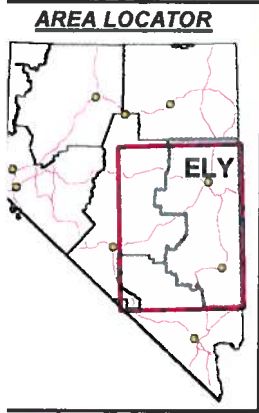
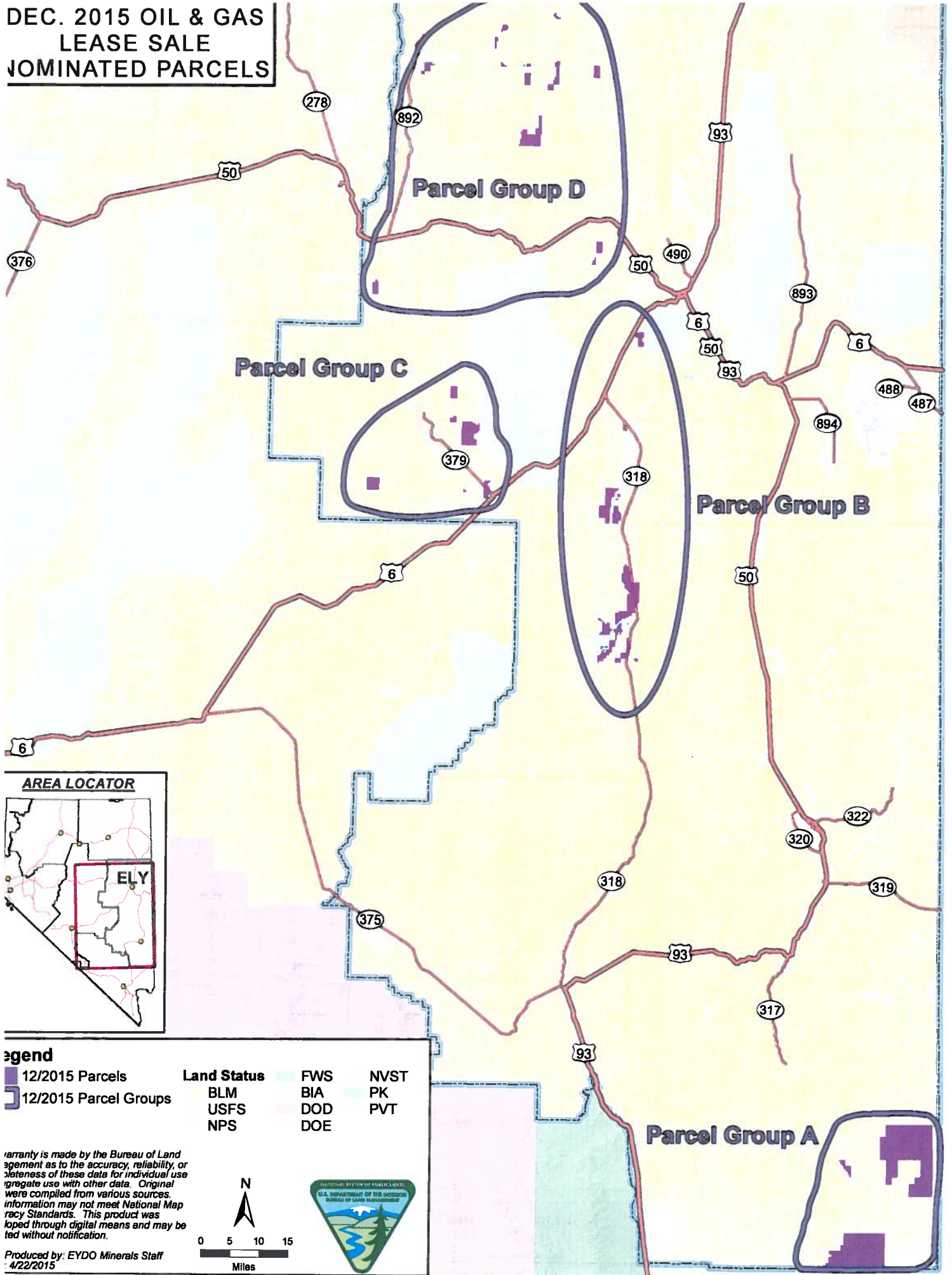
The BLM expects to make the preliminary EA available for public review and comment in June 2015. A Competitive Oil and Gas Lease Sale is scheduled on Dec. 8, 2015. Additional information about the sale is available at <http://on.doi.gov/1PjuS5t>

For more information, contact Carissa Shilling at the BLM Caliente Field Office at (775) 726-8175.

--BLM--

The BLM manages more than 245 million acres of public land, the most of any Federal agency. This land, known as the National System of Public Lands, is primarily located in 12 Western states, including Alaska. The BLM also administers 700 million acres of sub-surface mineral estate throughout the nation. The BLM's multiple-use mission is to sustain the health, diversity, and productivity of the public lands for the use and enjoyment of present and future generations. In Fiscal Year 2012, activities on public lands generated \$4.6 billion in revenue, much of which was shared with the States where the activities occurred. In addition, public lands contributed more than \$112 billion to the U.S. economy and helped support more than 500,000 jobs.

**DEC. 2015 OIL & GAS
LEASE SALE
JOMINATED PARCELS**



Legend

12/2015 Parcels	Land Status	FWS	NVST
12/2015 Parcel Groups	BLM	BIA	PK
	USFS	DOD	PVT
	NPS	DOE	

Warranty is made by the Bureau of Land Management as to the accuracy, reliability, or completeness of these data for individual use. No warranty is made for aggregate use with other data. Original data were compiled from various sources. This product was developed through digital means and may be updated without notification.

Produced by: EYDO Minerals Staff
4/22/2015

