



SEEKING YOUR INPUT

EXTENSION OF SCOPING PERIOD

March 28, 2014 – April 28, 2014

Gold Rock Project Environmental Impact Statement

United States Department of the Interior
BUREAU OF LAND MANAGEMENT
Egan Field Office
HC33 Box 33500 (702 N. Industrial Way)
Ely, Nevada 89301-9408

http://www.blm.gov/nv/st/en/fo/ely_field_office.html

The Bureau of Land Management (BLM) has extended the public scoping input period for the Gold Rock Mine Project Environmental Impact Statement (EIS) for an additional 30-day period that will end on April 28, 2014. The initial scoping period opened on September 5, 2013 and closed on October 7, 2013. Public scoping meetings were held on September 24, 25, and 26 in 2013 in Ely, Eureka, and Reno, NV, respectively. The BLM had set up an e-mail account to receive scoping comments on the Gold Rock Mine Project EIS during the initial scoping period (September 5, 2013 through October 7, 2013). On November 7, 2013 the BLM learned that the e-mail account and all of its contents had been permanently deleted during the federal government shutdown.

The BLM invites you to submit comments and requests that anyone who submitted comments by e-mail during the initial 30-day scoping period resubmit their comments by mail (BLM Ely District, Egan Field Office, HC 33 Box 33500, Ely, NV, 89301-9408), by fax ((775) 289-1910) or through the BLM's on-line ePlanning system (https://www.blm.gov/epl-front-office/eplanning/nepa/nepa_register.do) during this 30-day extension of the public input period, which closes April 28, 2014. No changes have been made to the Proposed Action. No scoping meetings will be held during this 30-day extension of the public input period, as these meetings were not affected by the technical difficulties with the e-mail account.

Your comments will help guide development of the EIS, including the identification of relevant issues and possible alternatives. Comments should be postmarked, faxed or otherwise delivered to the Ely District Office by Monday, April 28, 2014, to ensure full consideration. Please make your comments as specific as possible.



(Continued on back, please turn over)

Landscape In the Vicinity of the Proposed Gold Rock Project

Known as the Gold Rock Project, the proposed mine would be located on mining claims administered by the BLM. The BLM is preparing an Environmental Impact Statement to evaluate all feasible and reasonable alternatives, and potential impacts of the proposed project.

The Proposed Gold Rock Project would:

- be located on mining claims on BLM-administered land
- be located in the southern Newark Valley and northern Railroad Valley, in White Pine County, Nevada, approximately 50 miles west of Ely and 30 miles southeast of Eureka
- occupy the same geographic area as the reclaimed and closed Easy Junior Mine
- obtain electrical power from the Mt. Wheeler Power 69 kilovolt (kV) transmission line that would supply the Pan Mine; this power line would be extended about 6 miles across the valley to tie into the west side of the Gold Rock Project electric system
- include concurrent land reclamation

Proposed Facilities at the Gold Rock Project:

- open pit
- heap leach pad, associated ponds, process facility, and refinery
- crushers, a ball mill, cyclones, and a thickener
- carbon-in-leach (CIL) plant
- waste rock dumps
- tailings storage facility
- water supply wells
- haul roads
- ancillary facilities
- 69-kV transmission line

The BLM has identified preliminary issues:

- socioeconomics
- cultural resources
- sage-grouse habitat and mule deer winter range
- wild horse habitat
- air quality
- loss of access to hunting area
- areas from which the proposed mine may be visible (viewsheds)

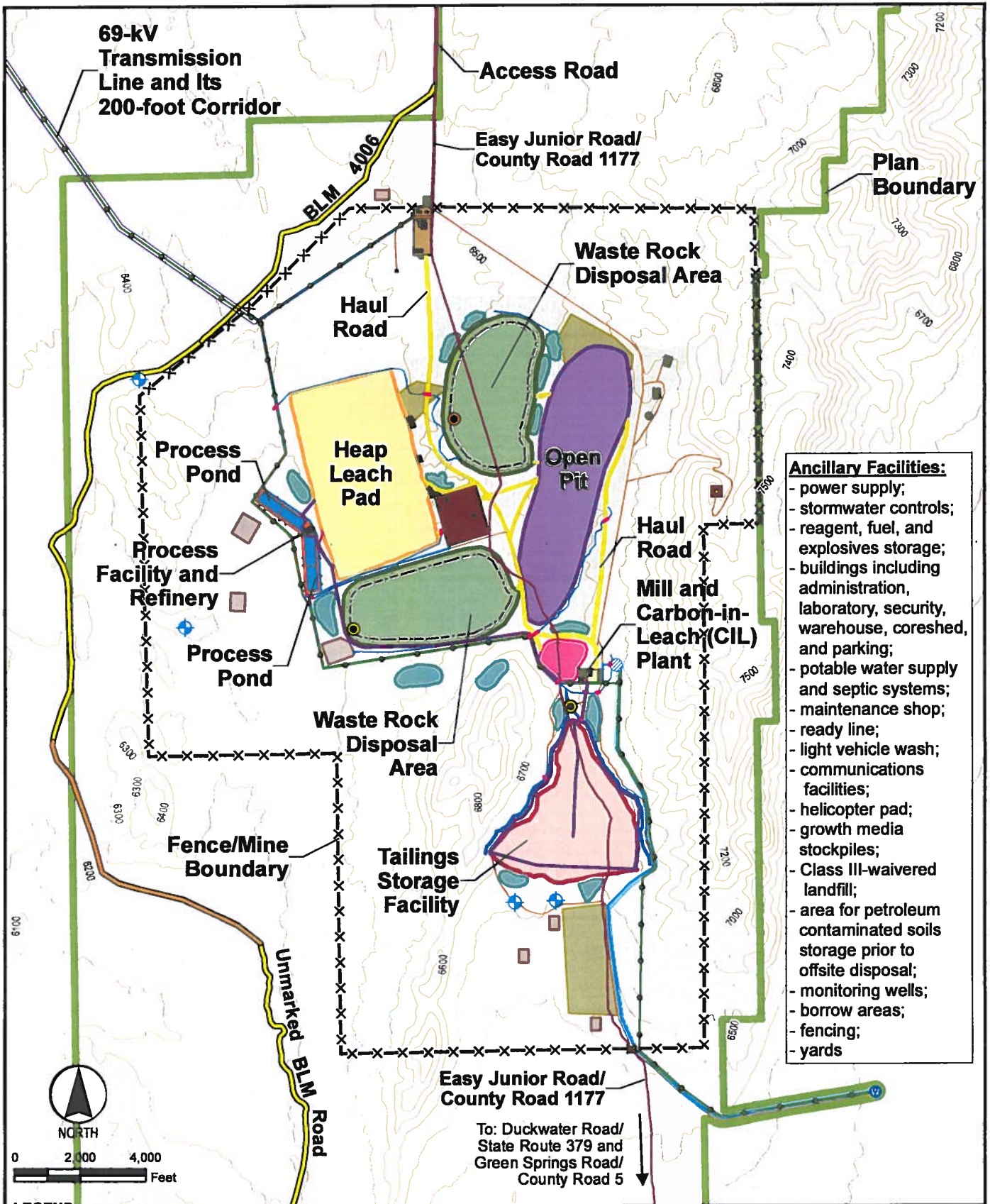


Additional information is available online at:

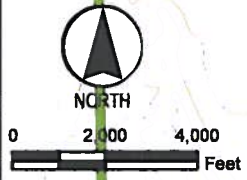
http://www.blm.gov/nv/st/en/fo/ely_field_office.html.

Click on the Ely District map and then click on the Gold Rock Project under "In the Spotlight." Project materials may also be viewed at the BLM Ely District Office, 702 N. Industrial Way, Ely, NV, from 7:30 a.m. to 4:30 p.m., Pacific Time, Monday through Friday, except holidays.

PATH: C:\USERS\JCHEN\DOCUMENTS\PROJECTS\GOLDROCK\GOLDROCK\MXD\2014_SCOPING\PROPOSED FACILITIES_FOR_2NDSCOPING.MXD | LAST SAVED BY: JCHEN | LAST SAVED ON: 3/7/2014 12:21:16 PM



- Ancillary Facilities:**
- power supply;
 - stormwater controls;
 - reagent, fuel, and explosives storage;
 - buildings including administration, laboratory, security, warehouse, coreshed, and parking;
 - potable water supply and septic systems;
 - maintenance shop;
 - ready line;
 - light vehicle wash;
 - communications facilities;
 - helicopter pad;
 - growth media stockpiles;
 - Class III-waivered landfill;
 - area for petroleum contaminated soils storage prior to offsite disposal;
 - monitoring wells;
 - borrow areas;
 - fencing;
 - yards



LEGEND	
	WATER SUPPLY WELL
	PROPOSED MONITORING WELL
	PLAN BOUNDARY
	FENCE/MINE BOUNDARY
	POTENTIALLY ACID GENERATING WASTE ROCK BOUNDARY
	CULVERT
	CRUSHING FACILITY
	CRUSHING AND AGGLOMERATION
	YARD
	GROWTH MEDIA STOCKPILE
	STOCK PILE
	BORROW AREA
	SEDIMENT BASIN
	PROPOSED COUNTY ROAD RE-ROUTE NEW ROAD CONSTRUCTION
	EXISTING BLM ROAD
	WATER PIPELINE
	BARGE OPERATING CHANNEL
	STORMWATER CONTROL
	SECONDARY ROAD
	INTER-FACILITY

GOLD ROCK MINE PROJECT

Proposed Facilities