

Skip Canfield

From: Simons, Matthew <msimons@blm.gov>
Sent: Monday, February 10, 2014 9:47 AM
To: Skip Canfield
Subject: Luning Solar Energy Project - Early coordination information
Attachments: Luning Project Map 1.pdf

Skip,

Per our phone conversation, here is a summary of the proposed solar project near Luning.

The BLM approved a 560-acre solar project in the same location in July 2009. The right-of-way (ROW) was closed in January 2013 at the request of the ROW holder with no development taking place. Invenergy Solar Development LLC (Invenergy) contact the BLM in July 2013 to find out about acquiring the closed ROW. The BLM informed Invenergy there was nothing to acquire; they could submit their own application for the same location since there was no active ROW.

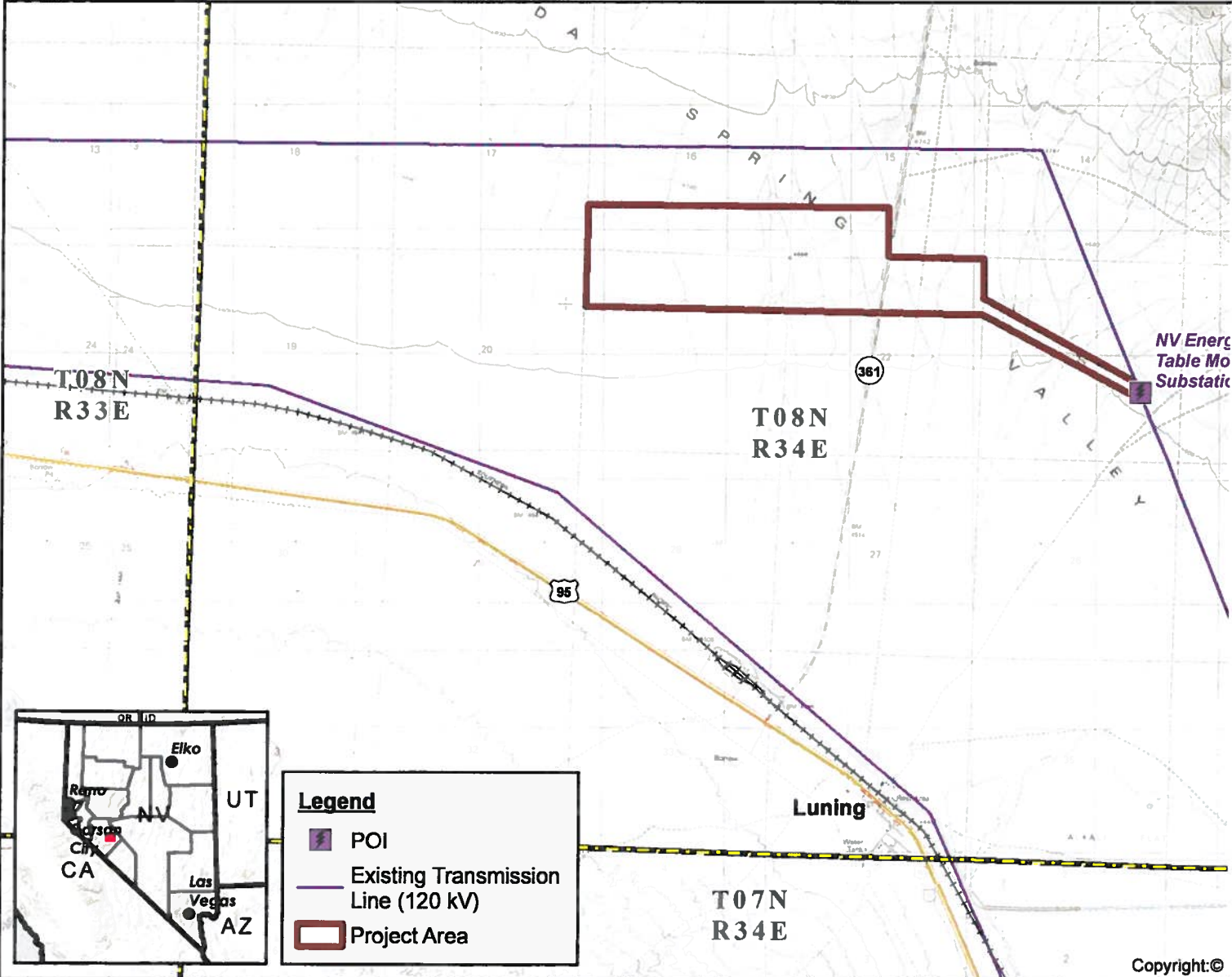
Invenergy submitted a detailed proposal in October 2013 outlining the project. They propose to develop a 50 MW name plate capacity solar energy generation facility using ground mounted photo-voltaic solar panels within the same project area previously permitted. The facility would tie in with the existing Sierra Pacific Power Company (NV Energy) transmission line, which originates at the Fort Churchill Generating Station north of Yerington, using a 1-mile long interconnect power line. The interconnect power line would tie in at the existing Table Mountain substation and would follow the same route as approved in the previous ROW. Invenergy does not have a power purchase agreement (PPA), however the feasibility studies have shown there is capacity in the line. NV Energy is working on the line studies to determine what will be required to connect the new solar plant to their transmission line. A PPA is anticipated.

The above information is being submitted to you as a part of the variance area process described in the Programmatic Environmental Impact Statement (PEIS) for Solar Energy Development in Six Southwestern States completed by the BLM in 2012. The PEIS requires early coordination with Federal, State, and local agencies to identify issues with proposals. The BLM has received an application for a solar ROW, but has not started the formal NEPA process. We are in the process of contacting affected agencies to fulfill the early coordination objectives.

Please forward this information to interested state agencies so we may receive feedback. We are mainly interested in major issues which would show this project should not be considered for additional consideration by the BLM, such as conflicts with State laws or regulations, or major resource concerns. The Nevada Public Utilities Commission and Department of Transportation are two agencies which immediately come to mind, but I'm sure you have others. The SHPO was consulted during the completion of the EA for the original ROW in 2009, as were the Mineral County Board of Commissioners, Walker River Paiute Tribe, Yomba Shoshone Tribe, and the Nevada Natural Heritage Program. The public had several opportunities to comment on the previous project and our Field Manager, Terri Knutson, intends to notice the new proposal as an agenda item for an upcoming Mineral County Board of Commissioners meeting. I will let you know which date she plans to present the proposal.

Please let me know if you have any questions or need additional information.

Matt Simons



Luning Solar Energy Project

Invenergy Solar Development LLC, Mineral County, Nevada

Rev. C
October 11, 2013