

## **Skip Canfield**

---

**From:** Ellis-Wouters, Lesli [lellis@blm.gov]  
**Sent:** Thursday, November 14, 2013 8:42 AM  
**To:** Lesli Ellis-Wouters  
**Subject:** BLM seeks input on proposed oil and gas exploration south of Elko  
**Attachments:** BLM ELDO 2014-004 Huntington Valley.docx

## ***BLM Nevada News***

### **ELKO DISTRICT OFFICE NO. 2014-004**

FOR RELEASE: Nov. 13, 2013

**CONTACT:** Lesli Ellis, (775) 753-0386; [lellis@blm.gov](mailto:lellis@blm.gov)

### **BLM seeks input on proposed oil and gas exploration south of Elko**

ELKO, Nev. – The Bureau of Land Management (BLM), Elko District, Tuscarora Field Office is seeking public input until Dec. 13 in the development of an Environmental Assessment (EA) to conduct gas exploration drilling in the Huntington Valley area, south of Elko near Jiggs, by Noble Energy (Noble) as part of its oil and gas exploration lease.

There will be an open house at the Elko District Office on Tuesday, Dec. 3, 2013 from 5 to 7 p.m. to discuss the project. There are no Wild Horse Herd Management Areas within the project area.

Noble proposes to drill and complete a maximum of 20 wells on public and private lands located approximately 21 miles south of Elko. Noble has identified 41 potential well pad locations, 20 of which may be constructed over a two-year period or more.

The lands in the project area include 34,962 public land acres (55 percent of the project area), 8,420 acres (13 percent) of private surface with BLM-administered subsurface mineral rights, and 20,112 acres (32 percent) of private lands and minerals, for a total of 63,494 acres. The proposed operations would comply with all applicable federal Onshore Oil & Gas Orders.

The BLM is seeking input in the development of this EA. Written comments may be mailed to BLM Elko District, Attn: Tom Schmidt, 3900 E. Idaho Street, Elko, NV 89801, faxed to (775) 753-0255, or e-mailed to

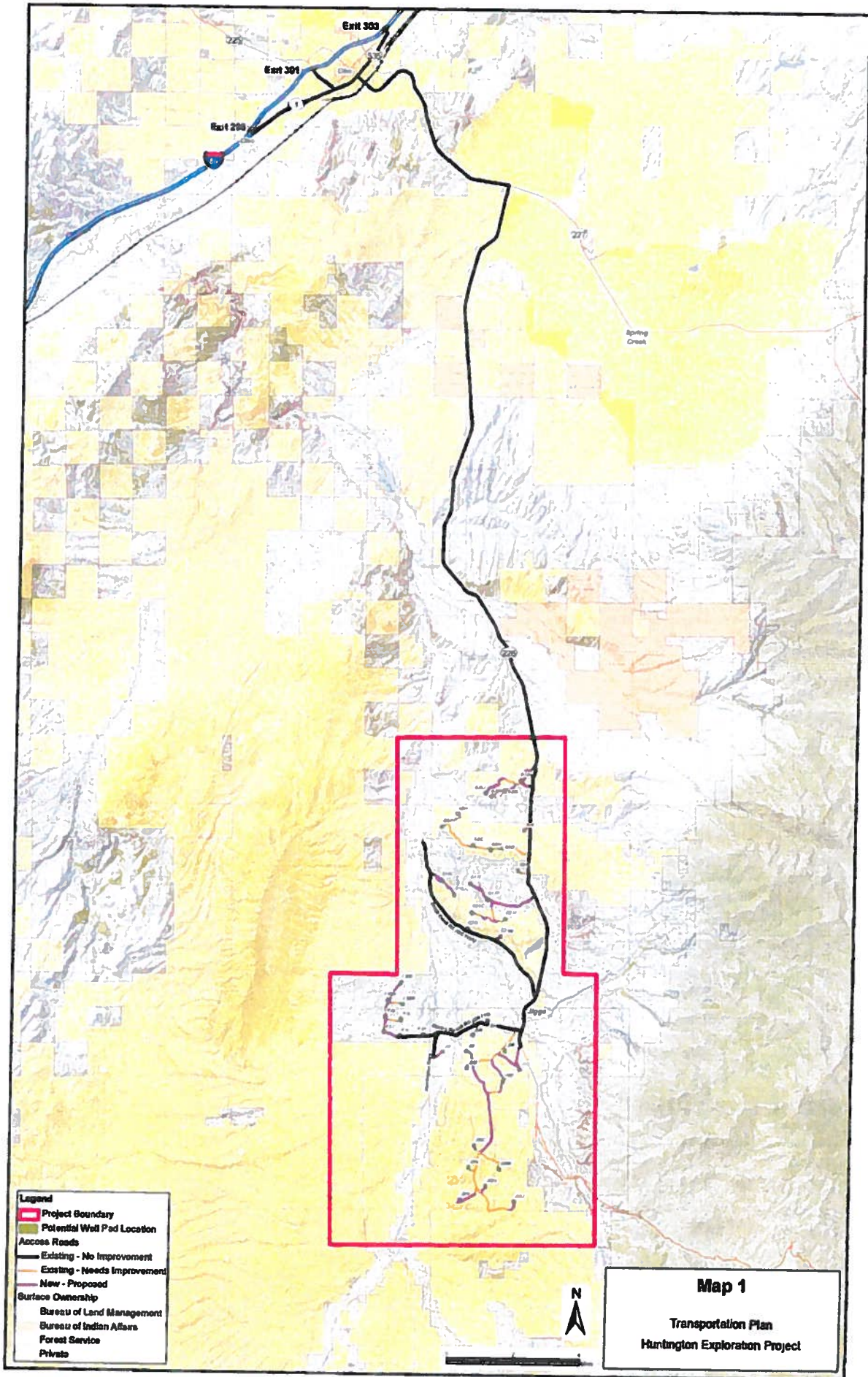
Tom Schmidt, Project Lead, at [tschmidt@blm.gov](mailto:tschmidt@blm.gov). Noble's Master Surface Use Plan and project maps are available at [www.blm.gov/rv5c](http://www.blm.gov/rv5c).

Before including your address, phone number, e-mail address, or other personal identifying information in your comment, you should be aware that your entire comment – including your personal identifying information – may be made publicly available at any time. While you can ask us in your comment to withhold your personal identifying information from public review, we cannot guarantee that we will be able to do so.

-BLM-

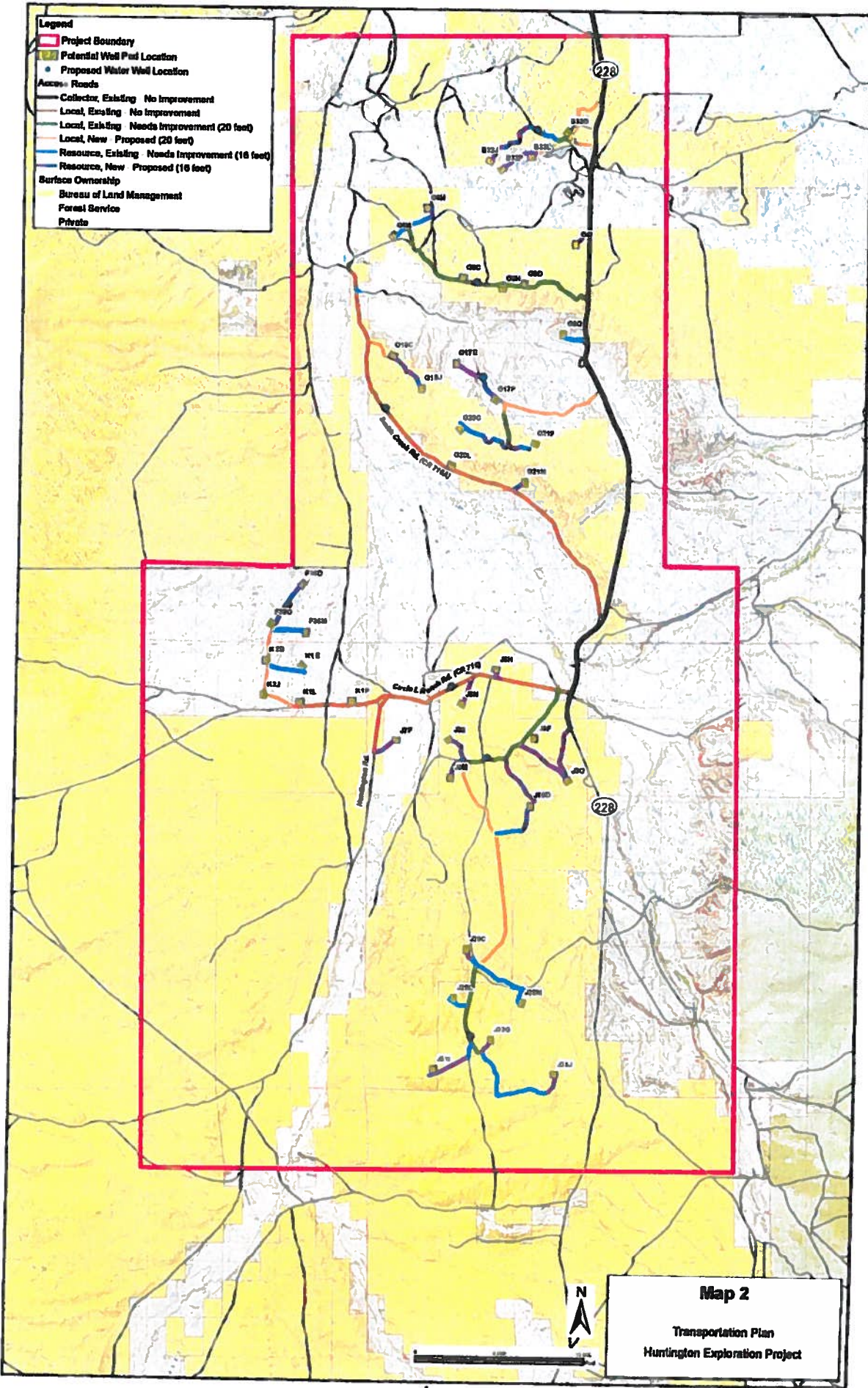
--

***Lesli J. Ellis***  
Public Affairs Specialist  
Elko District Office  
Bureau of Land Management  
3900 E. Idaho St.  
Elko, NV 89801  
(775) 753-0386





- Legend**
- Project Boundary
  - Potential Well Pad Location
  - Proposed Water Well Location
  - Access Roads
    - Collector, Existing No Improvement
    - Local, Existing No Improvement
    - Local, Existing Needs Improvement (20 feet)
    - Local, New Proposed (20 feet)
    - Resource, Existing Needs Improvement (10 feet)
    - Resource, New Proposed (10 feet)
  - Surface Ownership
    - Bureau of Land Management
    - Forest Service
    - Private



**Map 2**  
 Transportation Plan  
 Huntington Exploration Project