



***Marine Corps Mountain Warfare Training
Center***

Command Brief

Nevada Joint Military Affairs Committee Brief

August 2016



Mission

The Marine Corps Mountain Warfare Training Center conducts *service-level MAGTF integrated exercises and supporting formal schools, develops warfighting doctrine, supports RDT&E for specialized equipment for use in mountain warfare operations, and maintains installation infrastructure and services in order to facilitate increased USMC readiness.*

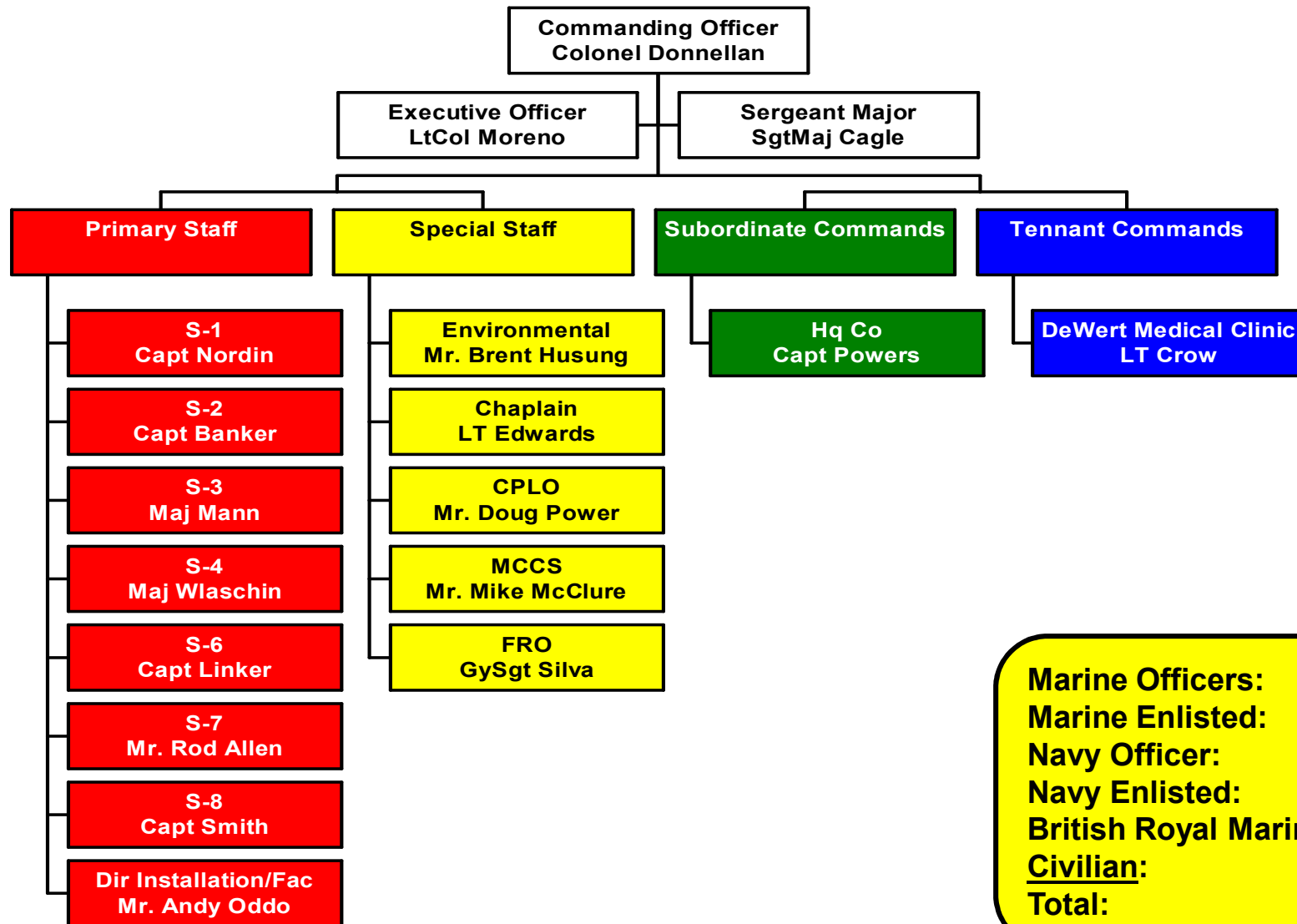


Other Components to Mission

- Doctrine
 - MCTP 12-10A/MCWP 3-35.1 Mountain Warfare Operations (MWO)
 - MCRP 12-10A.1/3-35.1A Small Unit Leaders Guide to MWO
 - MCRP 12-10A.2/3-35.1B Mountain Leader's Guide to Winter Ops
 - MCRP 12-10A.3/3-35.1C Mountain Leader's Guide to MWO
 - MCRP 12-10A.4/3-35.1D Cold Region Operations
 - MCRP 12-10A.5/3-35.1E Special Forces Use of Pack Animals
 - Mountain-General Intelligence Requirements Handbook (M-GIRH)
- Research, Development, Test & Evaluation
 - Mountainous & Cold Weather Clothing / Equipment



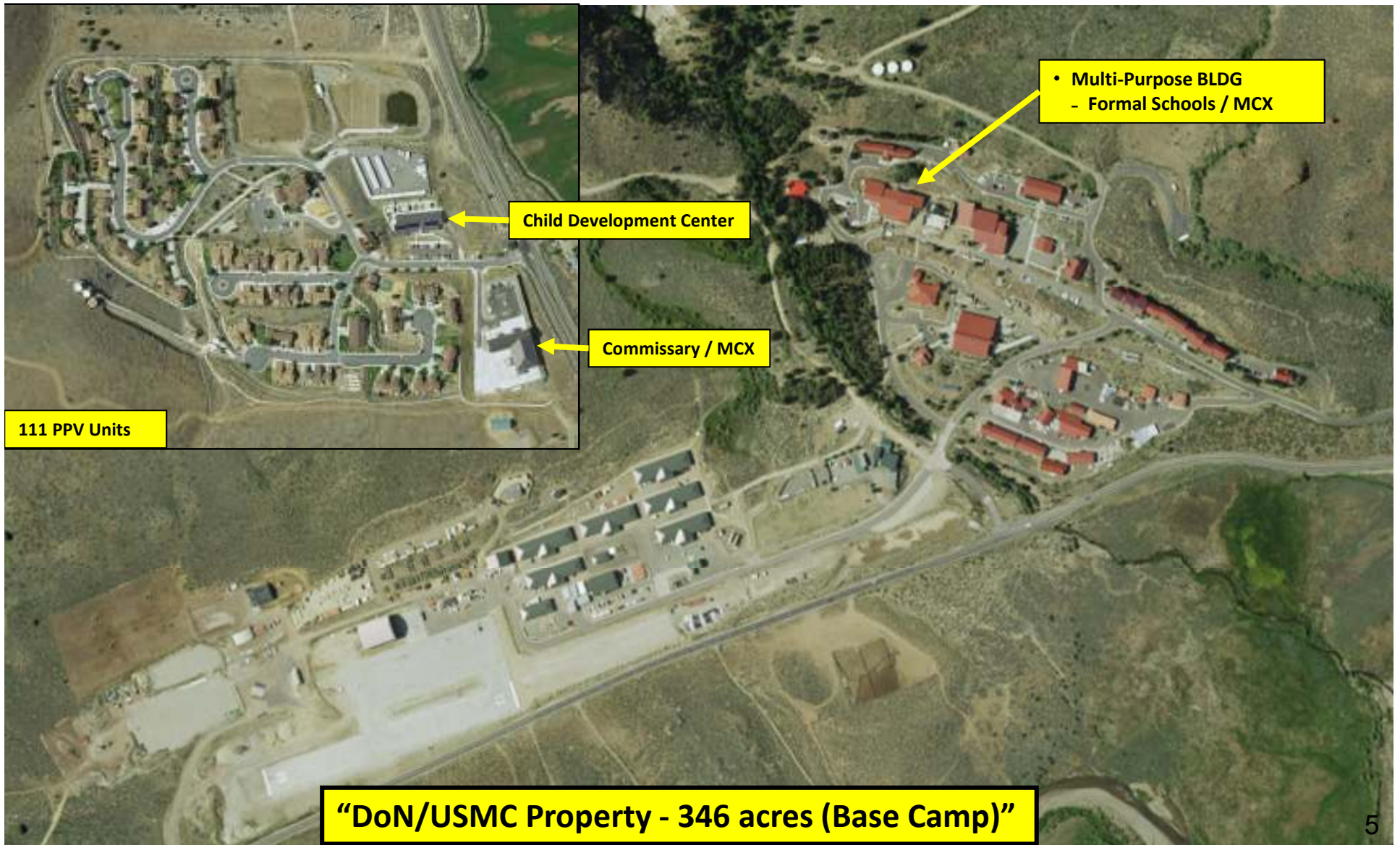
MCMWTC Task Organization



Marine Officers:	18
Marine Enlisted:	180
Navy Officer:	3
Navy Enlisted:	10
British Royal Marine:	1
Civilian:	97
Total:	309

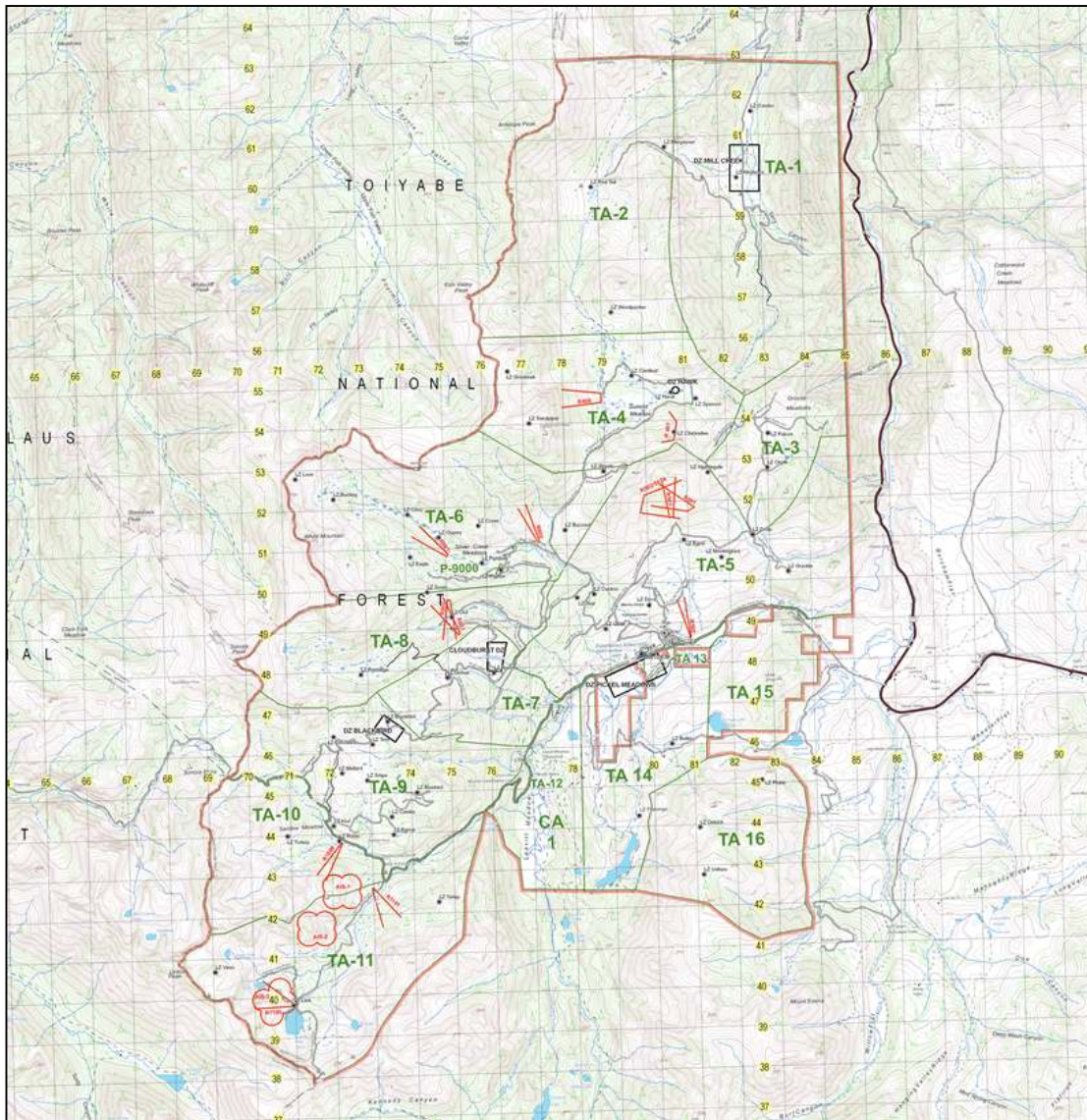


Base Camp and Military Housing





Training Area



Humbolt-Toiyabe National Forest

- 52,340 acres in Summer
- 61,976 acres in Winter
- Land in the 16 Training Areas owned and operated by USFS, California Fish and Wildlife and BLM, as well as some private inholdings
- 16 Live Fire Ranges
 - 9mm, .45cal, 5.56mm, 7.62mm, .50cal
- 59 LZs
 - Currently Osprey LZs are approved on a case by case basis.
- 7 DZs



Training Corridors





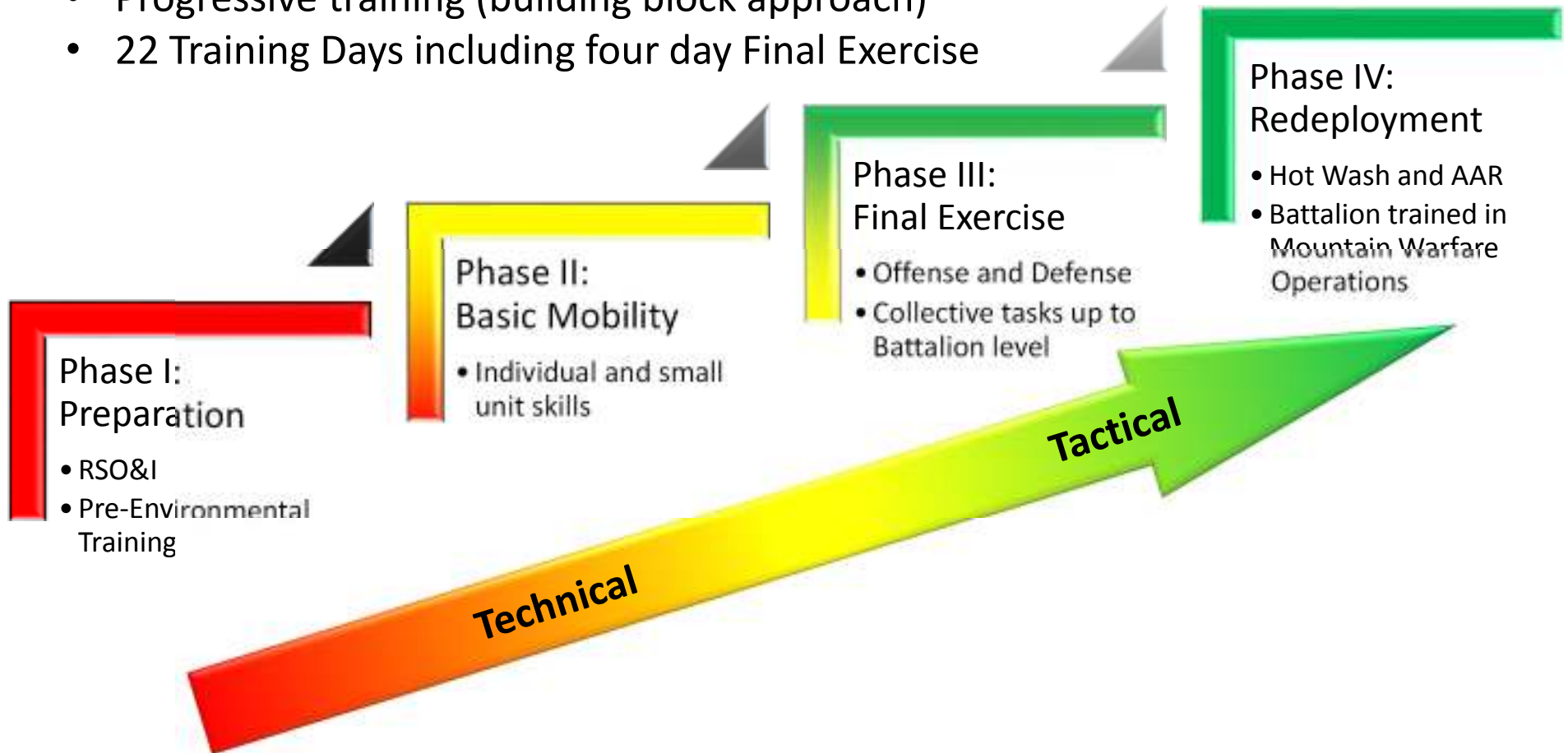
Mountain Exercise

- **Mountain Exercise (MTX), is a Service Level Training Event, conducted per MCO 3500.11F, MAGTF-TP, to meet training standards in select Core/Core Plus METs focused on missions in a complex environment, specifically addressing the technical aspects of mountain and cold weather operations.**
- MTX integrates each element of the MAGTF, consisting of a GCE with one infantry battalion, an LCE with a task organized Combat Logistics Detachment, 3DMAW Assault Support detachment, and enabler units.
 - Six exercises per year (4 summer, 2 winter)
 - Assessment of Core/Core Plus METs
 - ***MCT 1.6.9 Conduct Mountain Warfare Operations***
 - ***MCT 1.6.1 Conduct Offensive Operations***
 - ***MCT 1.6.4 Conduct Defensive Operations***



Mountain Exercise Phases

- Progressive training (building block approach)
- 22 Training Days including four day Final Exercise





Mountain Warfare Formal Schools

- MTX Formal Schools

- Mountain Scout Sniper Course
- Mountain Communications Course
- Assault Climber Course
- Scout Skier Course
- Animal Packer Course
- Horsemanship Course
- Mountain Medicine Course
- Cold Weather Medicine Course

- Formal Schools

- Summer Mountain Leader Course
- Winter Mountain Leader Course
- Mountain Survival Course



MCMWTC Aviation Operations

- High Altitude Aviation Operations
 - 3rd MAW
 - 3DMAW ISO MTX (2x Cold Wx)
 - NAWDC Mountain Flying Course
 - VMM “Out and In”
- No DOD Special Use Airspace
 - UAS and FW limitations
 - Safety concerns
- Limited sUAS Operations
- Simulated Close Air Support
 - No current execution
- Expeditionary Airfield (EAF)
 - Hot fuel only
 - Hangar
 - ASOS
- 59 LZs and 7 DZs up to 11,200 feet MSL
- No Live Fire



OTS Capabilities



Cargo



Trailer



Tucker Lite



14 PAX



MCMWTC Facilities

- **Infrastructure**

- 57 Buildings / 373K Sq Ft
- 56 Miles of Road (3.5 paved / 53 unpaved)

- **Projects**

- Multipurpose Bldg– *In Progress*
- ELMR– *Scheduled for FY16*

- **Personnel**

- Facility Director
- Public Works
 - 5 Civilians
- Fac Maint
 - 1 USMC Captain, 21 Marines
 - 10 Civilians



Services

Coleville Housing

- Children and Youth Programs (Child Care ages 1-5)
- Commissary (small grocery store)
- Small Marine Exchange (Open 7 days a week providing basic necessities)
- Family Service Center
 - New Parent Support
 - Counselor

Base Camp

- Small Marine Exchange
- Club/Restaurant
- Gym
 - Outdoor Recreational equipment (boats/campers etc..)
 - Single Marine Program (Program for Single Marines/Sailors, movies, trips to town, special events)



Questions?