

A wide-angle photograph of a mountain valley. In the foreground, there are green pine trees and a grassy slope. In the middle ground, a cluster of buildings with red roofs is visible, likely the training center. The background features rugged mountains under a clear blue sky.

*Marine Corps
Mountain Warfare Training Center
Pickel Meadow, California*

Command Brief



Mountain Warfare

- Mountains cover 24% of the Earth's land mass: **64% of Asia**, 25% of Europe, 22% of South America, 17% of Australia, and 3% of Africa.
- Asia is the world's largest and most populous continent with approximately 4 billion people (**60% of world population**)
- Majority of the world's rivers are fed from mountain sources, **and more than half of humanity depends on mountains for water**
- Future National Security Challenges (Arc Of Instability)



Past

Present

Future?



Commandant's Priorities

*"...the Corps will prepare to conduct operations against hybrid threats in complex environments; such urbanized littorals, **mountainous terrain** and dense jungles."*

Marine Corps Vision and Strategy 2025

- We will continue to provide the **best trained and equipped Marine units to Afghanistan**. This will not change. This remains our top priority!
- We will rebalance our Corps, **posture it for the future** and aggressively experiment with and implement new capabilities and organizations
- We will better **educate and train** our Marines to succeed in distributed operations and **complex environments**
- We will keep faith with our Marines, our Sailors and our families



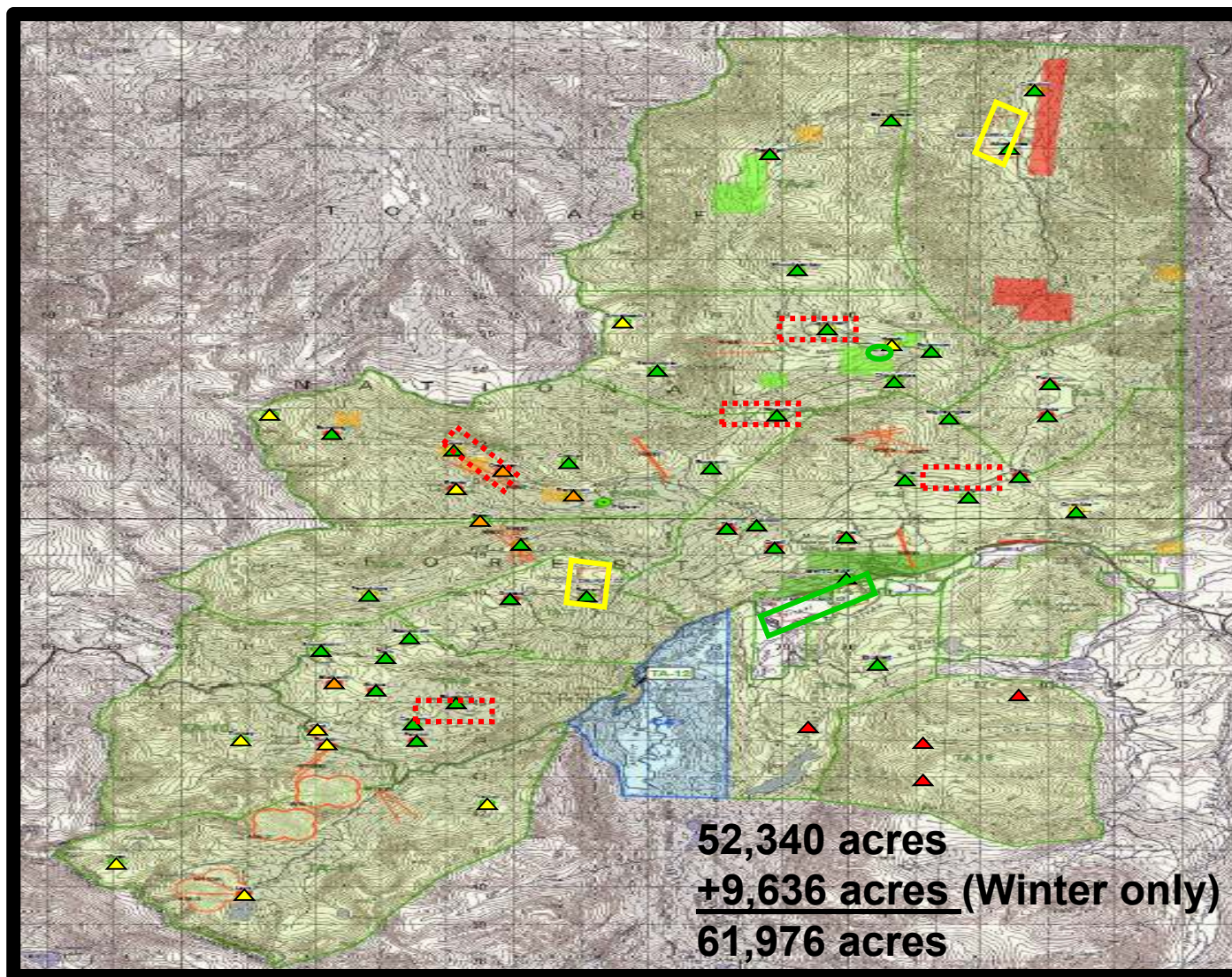
Mission

The Marine Corps Mountain Warfare Training Center conducts **unit and individual training** courses to prepare USMC, Joint, and Allied Forces **for operations in mountainous, high altitude and cold weather environments.**





Training Area



MCMWTC Training Venues

B-17 Ranges

NAS
Fallon



~53 mi

HWAD

Ryan Canyon



Mt Grant

Rocket Mtn



Lucky Boy Pass



~60 mi

~90 mi

MWTC

SWEETWATER
AIRSTRIP





Mountain Exercise (MTNEX)

Purpose: Per the Marine Corps Mountain Warfare Operations Training and Readiness Manual; train elements of the MAGTF across the warfighting functions for operations in complex, compartmentalized, and mountainous terrain utilizing military mountaineering skills in order to enhance a unit's ability to shoot, move, communicate, sustain, and survive in mountainous regions of the world.

– **Phase I: Preparation and Deployment**

- Mountain Warfare Formal Schools (MWFS) - SMLC, WMLC, MSSC, MCCCC, CWM, MMED, MOSPC, ANPK, & Survival
- ACC & SSC
- MOSPC Classes, MCPP & TEWT
- Pre-Environmental Training (PET) & COMEX

– **Phase II: Shaping**

- Basic Mobility - Military Mountaineering (Summer and Winter)
- CPX

– **Phase III: Decisive Action**

- FEX – Offense and Defensive Operations

– **Phase IV: Security and Stability Operations**

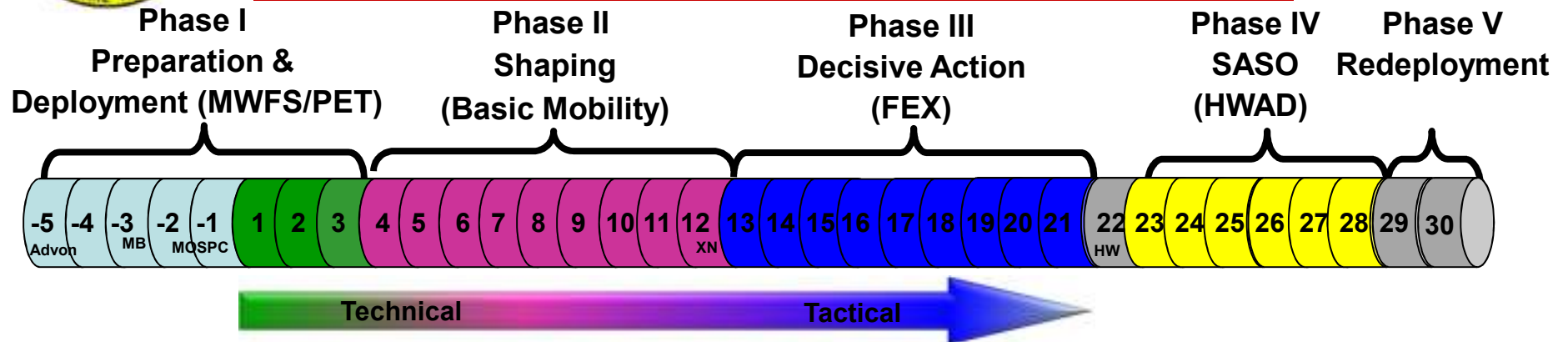
- Hawthorne – Live Fire, CIED, Patrolling, MOUT, & Cultural Engagement

– **Phase V: Redeployment**



MTNEX Phases

(7 x MTNEX / FY)



Phase I Formal Schools

- Summer Mountain Leader Course
- Winter Mountain Leader Course
- Mountain Scout Sniper Course
- Mountain Medical Course
- Cold Weather Medical Course
- Animal Packer Course
- Mountain Ops Staff Planning Course
- Mountain Communications Course
- Mountain Survival Course

Phase I Pre-Environmental Training

- Mountain/Cold weather leadership
- Mountain Safety
- Mountain Weather
- Mountain Health Awareness
- Personal Clothing and Equip
- Warfighting Load Requirements
- Snowshoes Movement (Winter)
- Bivouac Routine
- MCWIK – (Winter)
- Avalanche Awareness (Winter)
- Route Planning
- Mountain Movement Techniques
- Navigation in the Mountains
- CASEVAC Considerations
- Weapons and Optics Considerations

Phase II Basic Mobility

- Survival
- Survival Fires
- Water Procurement
- Expedient Shelters
- Survival Navigation
- Survival Signaling
- Avalanche Search Procedures (Winter)
- The Squad Tent & Stove (Winter)
- Land Navigation
- Over the Snow Mobility (Winter)
- Negotiate Snow and Ice Covered Obstacles (Winter)
- Sled Employment (Winter)
- Movement Over Rough Terrain
- Skijoring (Winter)
- TRST Skills (negotiate horizontal and vertical obstacles)

Phase III Company Tasks

- Occupy an Area / Establish a Defense
- Conduct a Patrol
- Conduct a Raid
- Conduct COIN Operations
- Conduct Security Ops
- Conduct a Cordon and Search / KLE
- Move on Rough Terrain / TRST
- Conduct Counter-IED Ops
- Establish an Overwatch / SBF
- Conduct Intelligence Ops / TSE
- React to a Meeting Engagement
- Water obstacle crossing
- Process a Casualty
- Conduct a Link Up
- Conduct Convoy / Motorized Ops
- Conduct an Attack (Day / Night)
- Conduct Urban Ops
- Conduct C2
- Conduct Maneuver
- Conduct Sustainment
- Conduct Fire Planning
- Conduct Force Protection

Phase IV Battalion Tasks

- Conduct Staff Planning
- Conduct Offensive Operations
- Conduct Defensive Operations
- Conduct Intel / TSE
- Operate the FSCC
- Conduct Fire Spt Coord
- Conduct Tactical Logistics
- Conduct MOUT Ops

Phase IV HWAD

- Includes Pit (REIN) LF and Maneuver
- Co CIED lane training
- Co MOUT
- CSW LF
- Convoy Ops



MTNEX Scenario

- Peninsular Campaign (North and South Toyiabe)
- Hybrid Warfare Scenario (Conventional, Unconventional, Stability Ops, HA, etc.)
- Apply technical mountaineering skills IOT gain a tactical advantage
- RSOI / Relief in Place incorporated into scenario
 - Road to War issued at IPC/MPC
 - RIP w/ French Alpines
 - Receive training from local mountain technical advisors (MCMWTC instructors)
- OEF Predeployment Training (PTP Block II / III Tasks)
 - Mounted / dismounted C-IED training
 - Convoy Ops
 - Cultural training (Afghan role players)
 - Information Operations (Individual engagement, KLE, HUMINT, etc.)
 - Tactical Site Exploitation
- Continued SOF integration for each MTNEX (SR, DA, Engagement)
- Aviation mission planning (ACE METs)
- Combined Arms Live Fire (Phase IV - HWAD)



MTNEX Phase I

Mountain Warfare Formal Schools

- **Summer Mountain Leader Course**
- **Winter Mountain Leader Course**
- **Mountain Scout Sniper Course**
- **Mountain Medical Course**
- **Cold Weather Medical Course**
- **Animal Packer Course**
- **Mountain Ops Staff Planning Course**
- **Mountain Survival Course**
- **Mountain Communications Course**





Unit Live Fire Training

Pickel Meadow

- 9mm, 5.56mm, 7.62mm
- 12 x Ranges
- High angle ranges/Sniper
- Up to squad live fire

Hawthorne

- 9mm, 5.56mm, 7.62mm, .50 cal, 40mm (TP), AT-4 HE, TOW HE, LAAW HE, SMAW HE, Javelin, 60mm HE, 81mm HE, Demo
- 11 x Flat Ranges
- 14 x Old Bomb Ranges
- High angle ranges/Sniper
- Up to company live fire supported attack
- Rocket and Missile Ranges



Summary

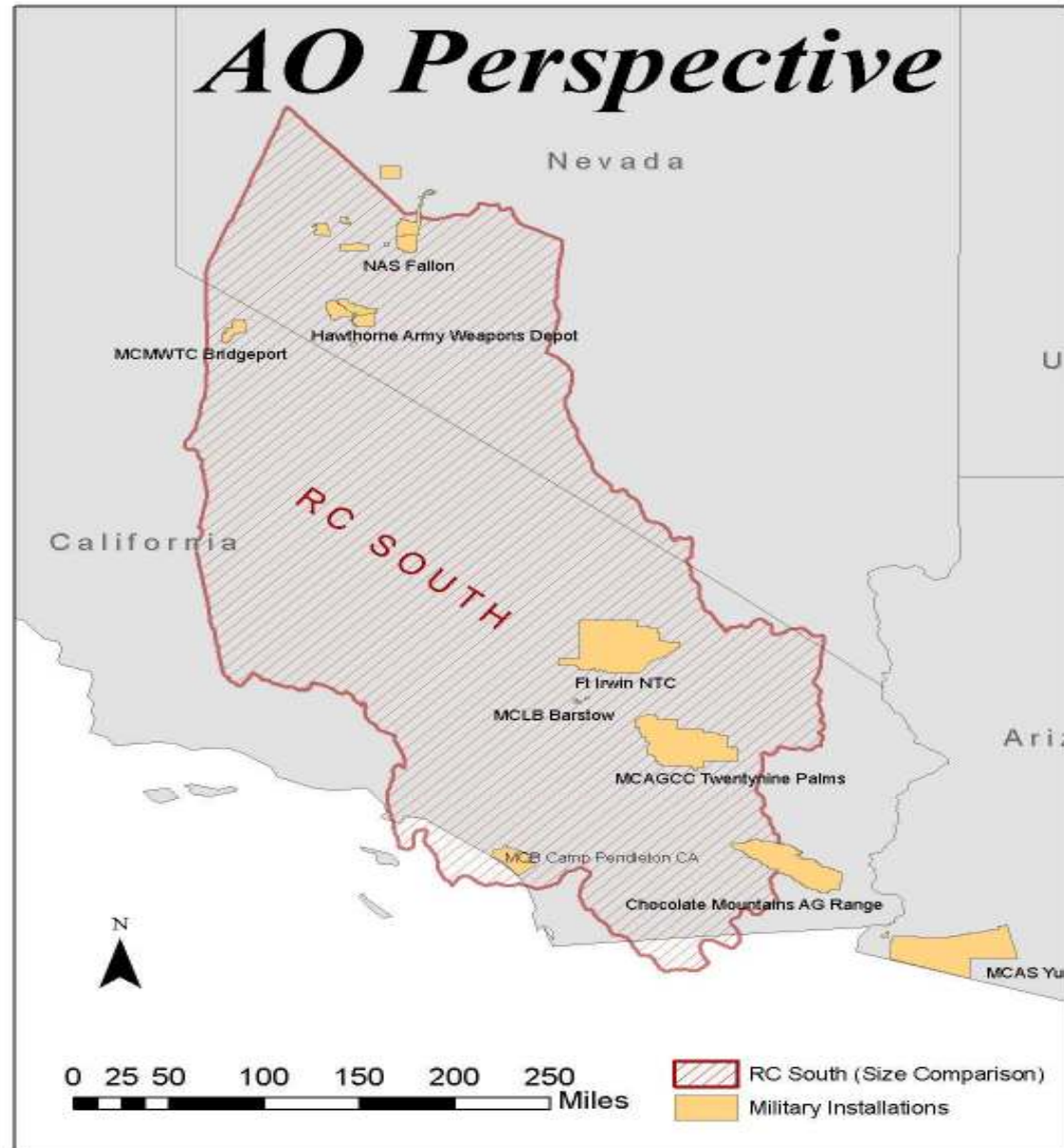
- The MCMWTC is committed to being the premier training center for Mountain Warfare Operations
- The MCMWTC fulfills a critical role in ensuring our Marine Corps remains the Nation's expeditionary force in readiness, capable of operating in complex environments
- Providing the best trained Marines to Afghanistan is our top priority; however, we must balance this with the requirement to posture our Corps to meet future national security challenges across the spectrum of conflict (Hybrid Warfare)

“...responding to TODAY's crisis, with TODAY's force, TODAY!”



MCMWTC Task Organization

• USMC Officer	18
• USMC Enlisted	203
• USN Officer	3
• USN Enlisted	9
• Tenant personnel	
- SWRFT	8
- Clinic	12 USN, 2 Civ
• Civilian Marines	
- GS/NSPS	61
- NAF Employees	50
• Subtotal MCMWTC	367
• Dependents	355
- Adult Spouses (169)	
- Children 0-6 (123)	
- Children 6-12 (41)	
- Children 12-18 (22)	
Total MCMWTC	722





“Every Clime and Place”

